



Candler Road Arterial Rapid Transit (ART)

October 2022

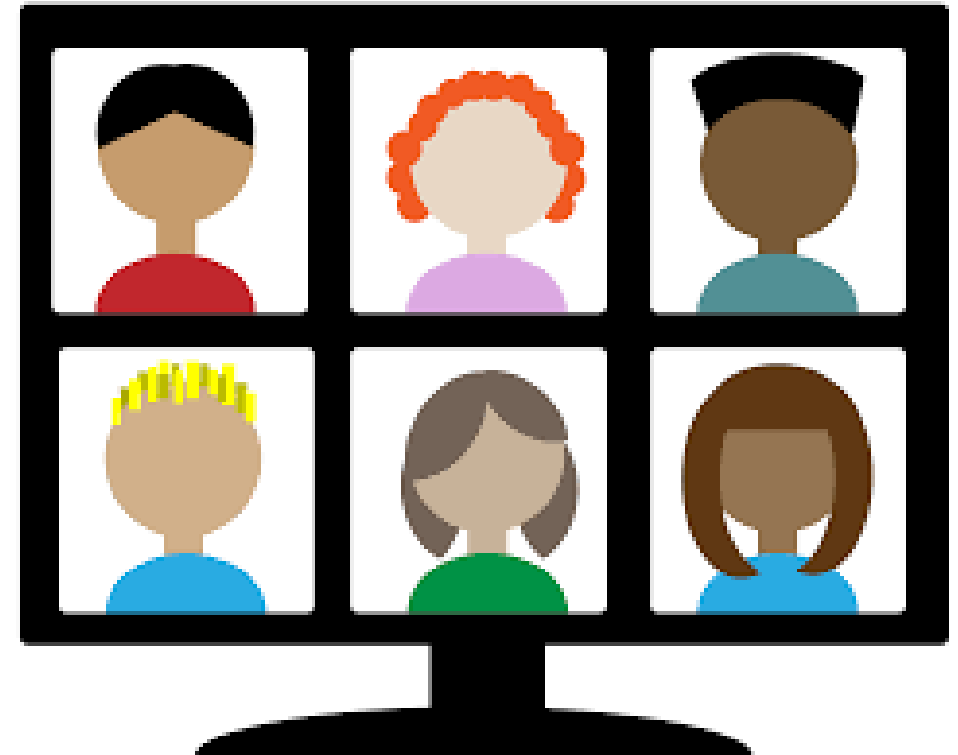
Agenda

- Welcome and Introductions
- What is Arterial Rapid Transit (ART)
- Project Background
- Candler Road ART Overview
- Project Timeline
- Discussion



Candler Road ART – Virtual Meeting Format

- Event Time: 6:00pm – 8:00pm
- Please use the **Q&A Section** to submit your project specific questions or comments. We will address as many questions/comments as time will allow.
- Your input is welcomed. Please participate in the **POLL QUESTIONS!**
- If you miss any details during the presentation, it will be posted on MARTA Candler Road ART’s project website.
- For additional information on the MARTA Candler Road ART project visit, <https://www.itsmarta.com/candlerART.aspx>



What is Arterial Rapid Transit (ART)?



Fast, frequent service on existing high-density, mixed-use arterial corridors



Traffic signal priority

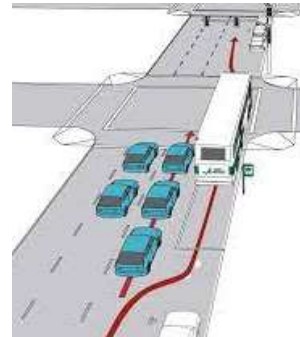


Image Source*

Queue jump lanes



Short wait times



Operated in mixed-traffic with other vehicles



Enhanced amenities

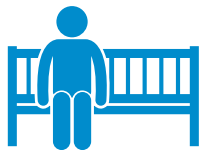
ART Amenities



Sheltered waiting areas



Real-time information



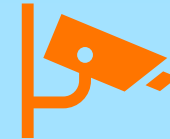
Seating



Trash receptacles



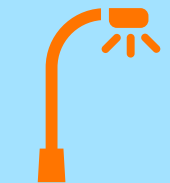
Call boxes



Security cameras



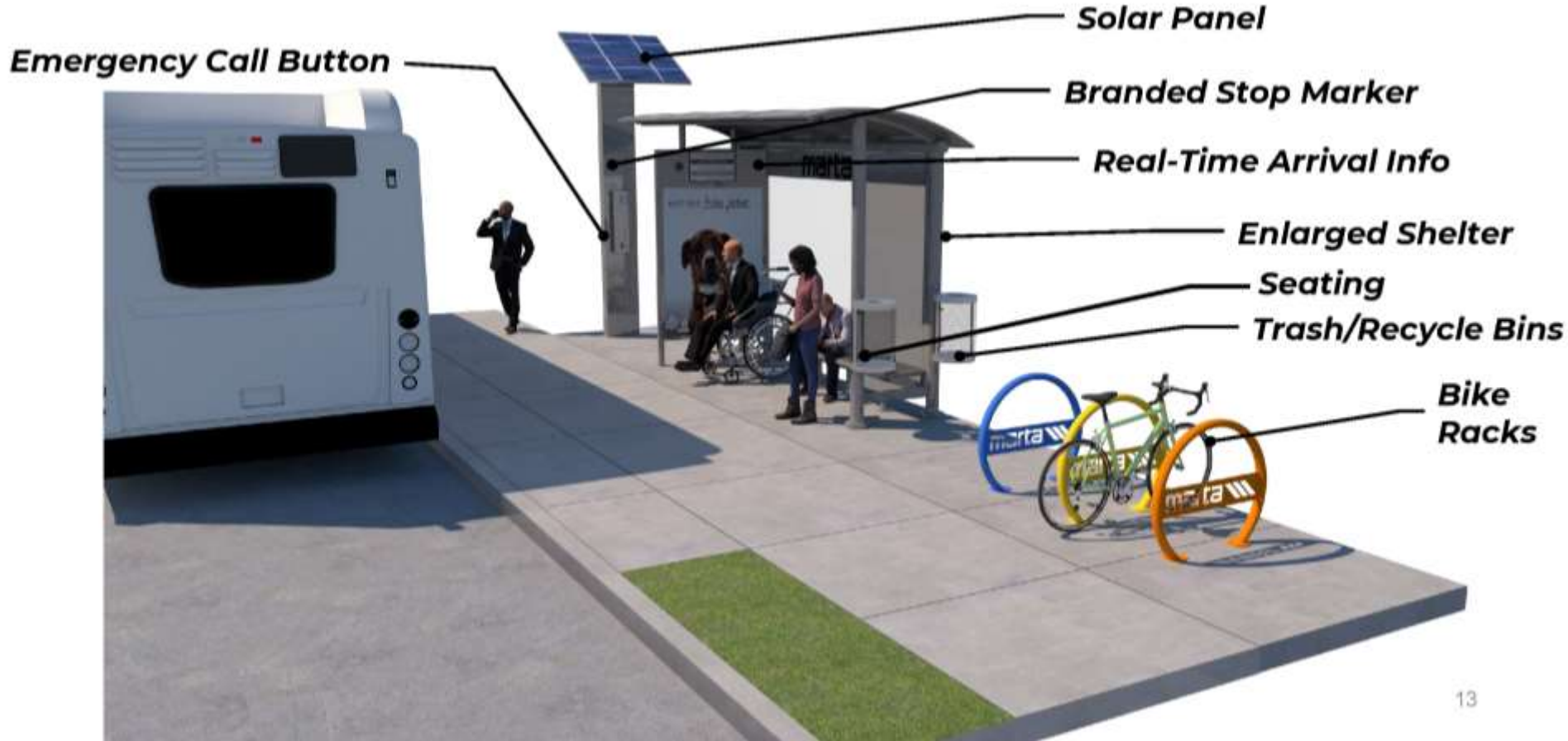
Bicycle storage



Lighting

Optional

Stop Amenities



13



Minneapolis, MN



Kansas City, MO

Examples of ART Stops



Benefits of ART

- Faster boarding
- Reduces travel time
- Increases transit reliability
- Improves safety
- Creates connections
- Reduces Greenhouse Gas (GHG) and local air pollutant emissions



DeKalb County Arterial Rapid Transit

- DeKalb Transit Master Plan (2019)
 - Candler Road – ART funded
 - Buford Highway – ART funded
 - Implementation in 2024
- MARTA delivering through 15th Amendment
 - Extends full penny sales tax through 2057
 - Provides secure funding stream for ART projects
- Current Activity
 - Conceptual station design for both projects underway
 - Outreach
 - Coordination with GDOT



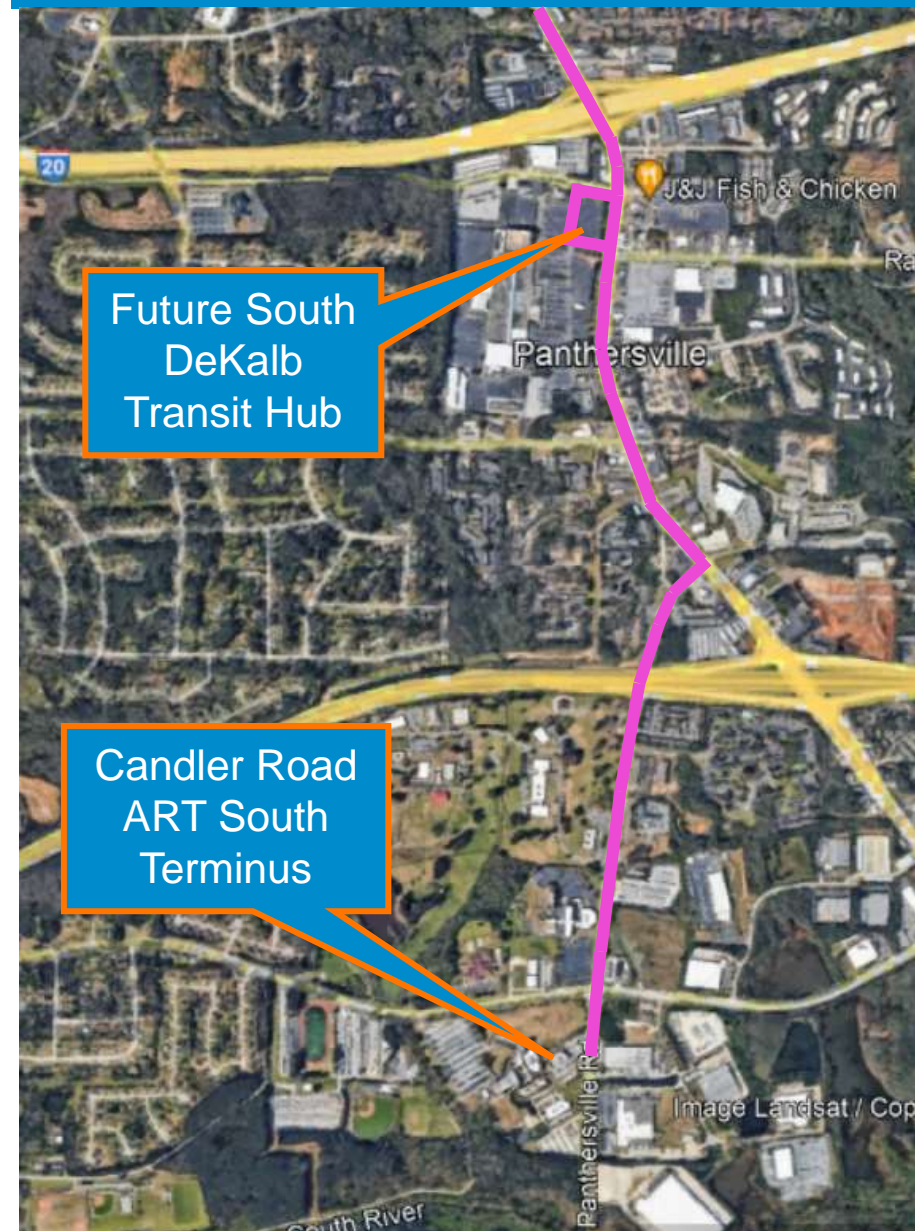
Project Overview

- The project is intended to connect the area near the Georgia State Perimeter College-Panthersville Campus to either the Avondale or Decatur MARTA Rail stations
- The project serves the Decatur area and provides mobility choices in and around Candler Road in unincorporated DeKalb County
- The Candler Road ART will include a stop at the future South DeKalb Transit Hub, located at South DeKalb Mall on Candler Road.



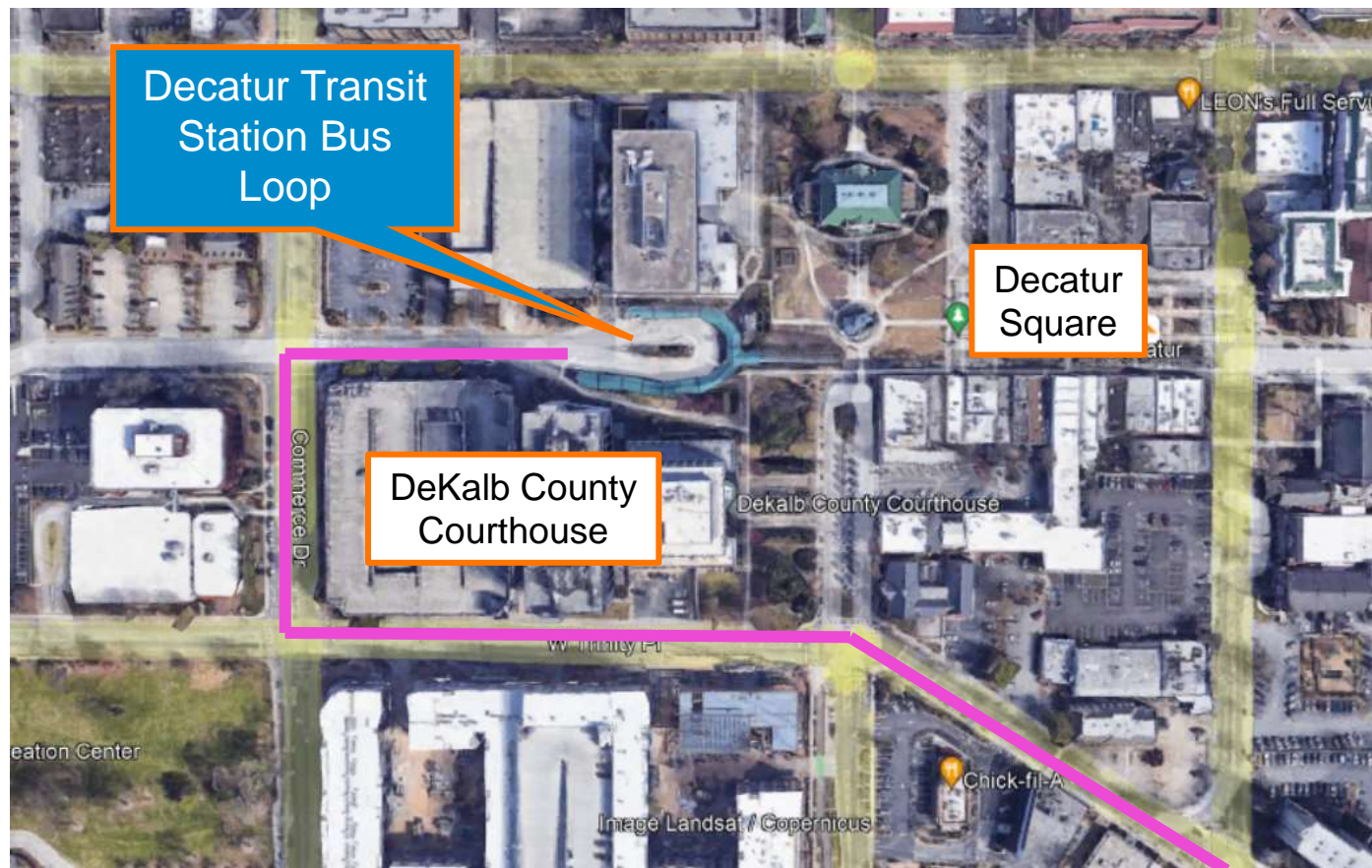
Project Overview

- Southern Terminus
- Georgia State/Perimeter College-Panthersville Campus



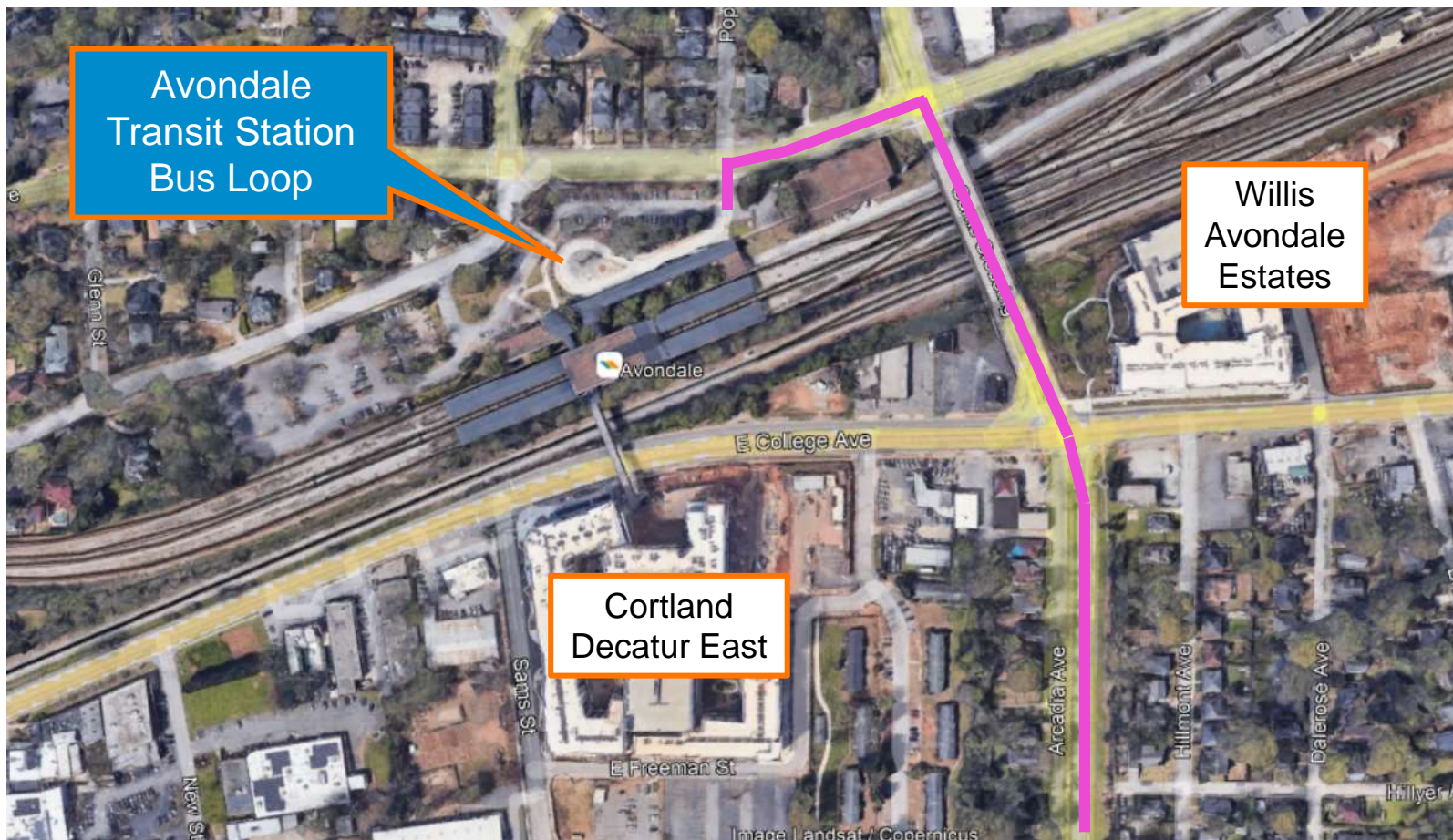
Project Overview

- Northern Terminus – Decatur Alternative



Project Overview

- Northern Terminus – Avondale Alternative



Terminus Stations – Pros & Cons

Decatur Station Alternative:

- Pros:
 - Connection to the busy activity center of Downtown Decatur
 - Most direct route from the GSU Panthersville south terminus
- Cons:
 - Congestion in downtown Decatur at peak commuting times

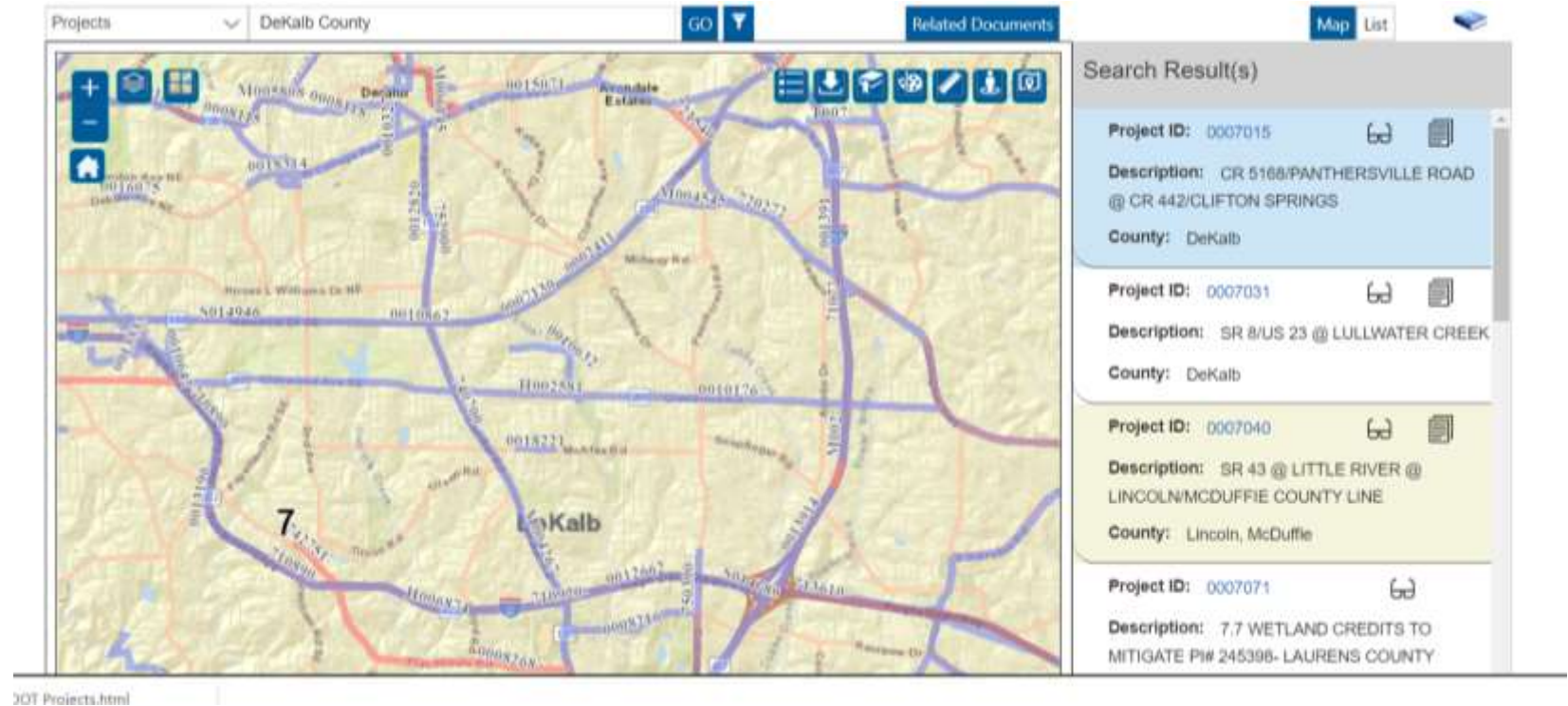
Avondale Station Alternative:

- Pros:
 - Less traffic at peak hours at critical intersections
 - Access to businesses and stores along Memorial Drive
 - Kroger and CitiCenter Kroger Plaza businesses
 - Avondale Walmart
- Cons:
 - Avondale Station is not an activity center
 - Less direct route from the GSU Panthersville south terminus



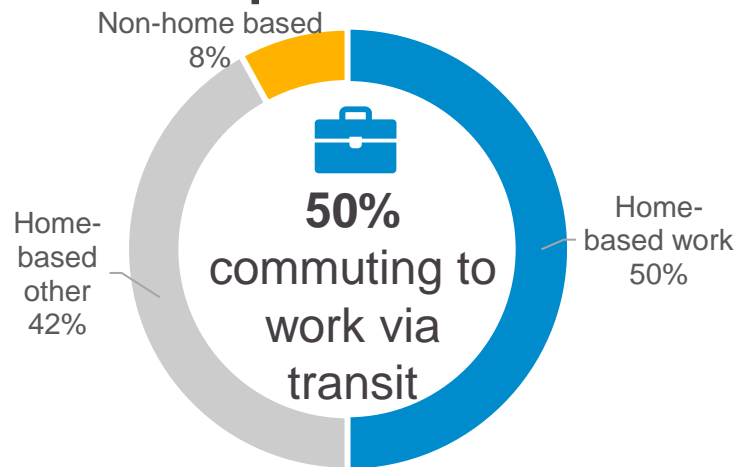
Coordination with Other Projects

- South DeKalb Transit Hub
- I-285 Express Lanes
- South DeKalb Transit Initiative
- Indian Creek MARTA Station Renovations
- Indian Creek and Kensington MARTA Station Transit-Oriented Development (TOD) Studies
- GDOT Projects

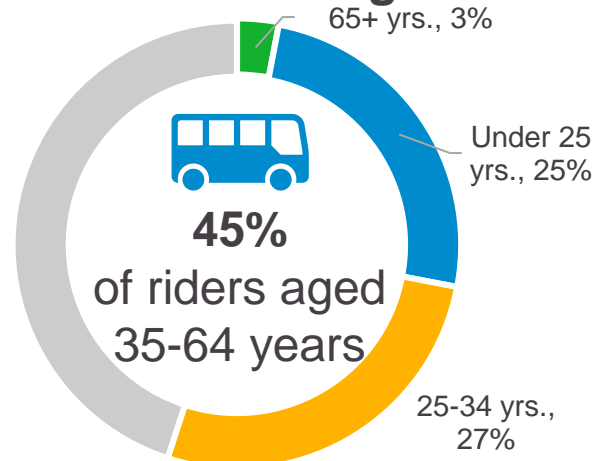


Study Area Characteristics

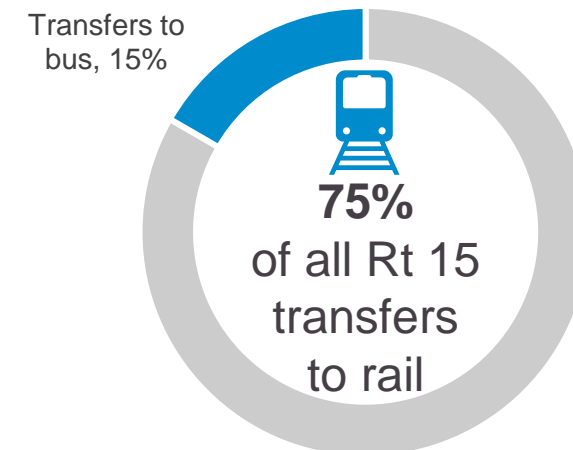
Trips to Work



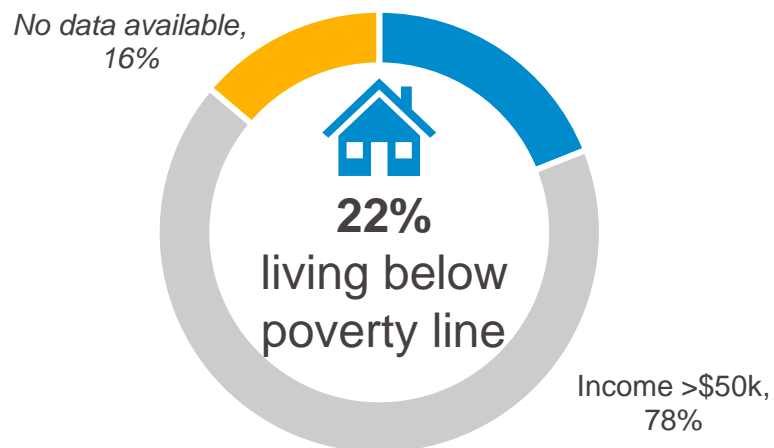
Transit Rider Age



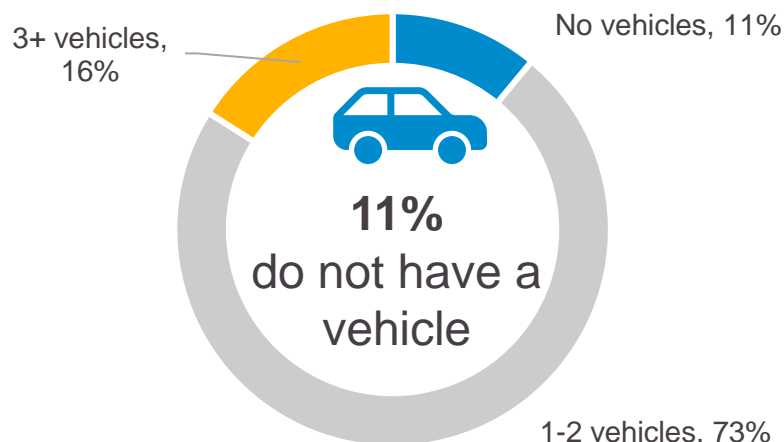
Route 15 Riders Transferring to Rail



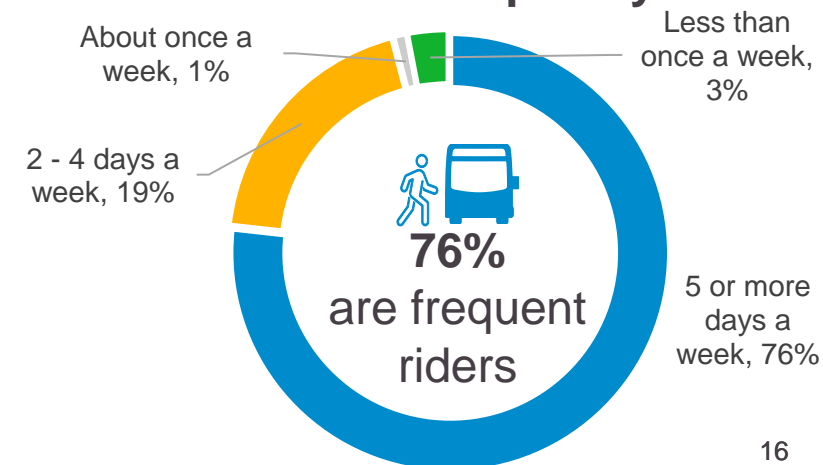
Household Income



No Vehicle Access



Transit Frequency





Current Ridership

Route 15 2019 Ridership

Weekday	3,000
Saturday	1,897
Sunday	1,582

(63% of weekday)

(53% of weekday)

Route 15 Current Travel Speeds

- Average run time: 25-29 minutes
- Calculated average speed: 14-16 mph

Top Transfer Location

ART Stop Locations: Criteria and Methodology



Ridership

- Existing high-ridership; high-need locations
- At least 25 daily riders



Stop Spacing

- ¼ mile to ½ mile
- Walkability and connectivity



Land Use

- Current destinations
- Future developments



Constructability

- Available space; utilities; private properties
- Coordination with other projects



Safety

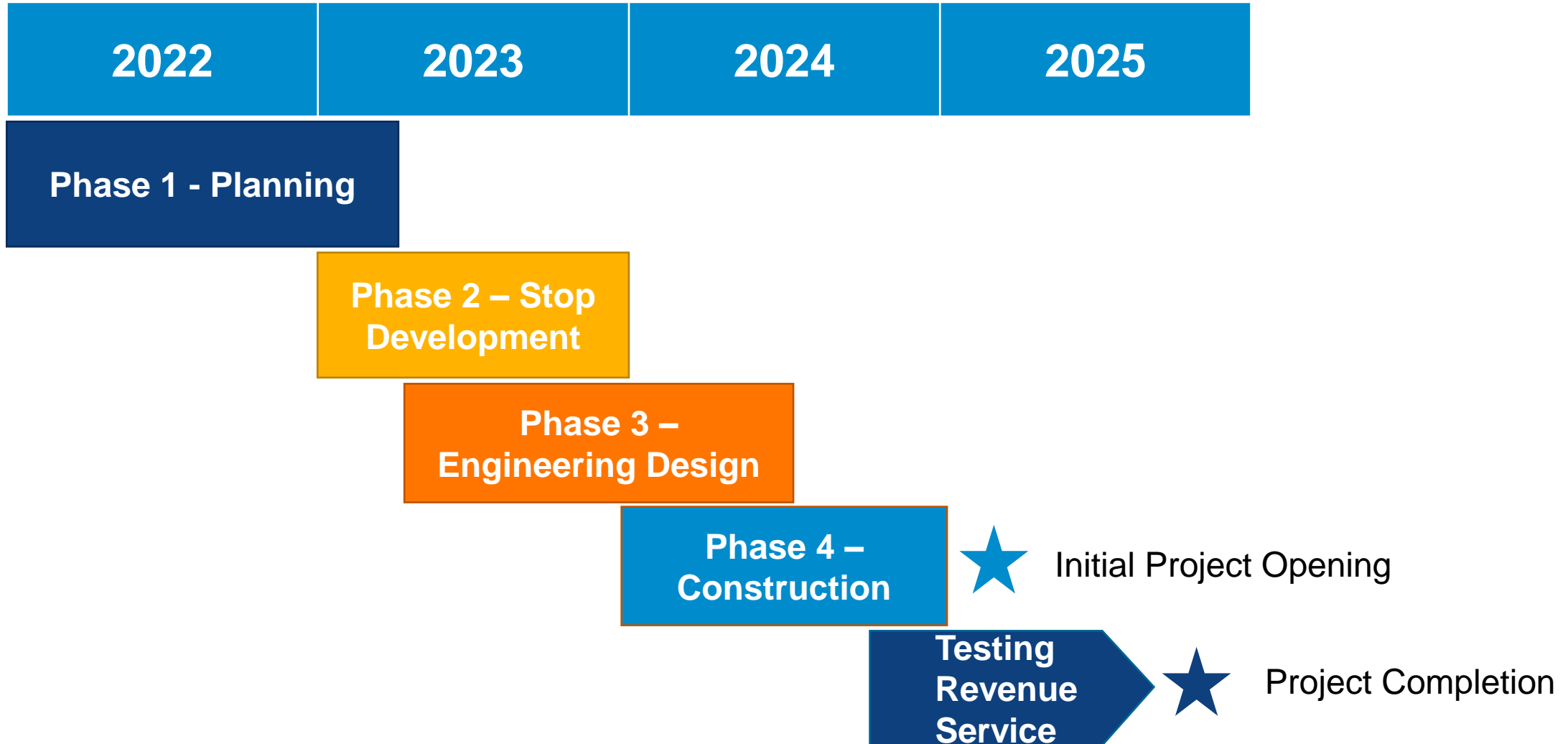
- Stop locations near flashing crosswalks and signalized intersections

Stop Spacing Discussion:

	Existing Route 15 Service	1/4 mile spacing	1/3 mile spacing	1/2 mile spacing
Number of Stops	45	Decatur Terminus: 29 Avondale Terminus: 36	Decatur Terminus: 23 Avondale Terminus: 27	Decatur Terminus: 15 Avondale Terminus: 21
Frequency	20 Minutes During Peak Hours	15 Minutes During Peak Hours	15 Minutes During Peak Hours	15 Minutes During Peak Hours
Picks up at Top Transfer Locations?	Yes	Yes	Yes	Yes
Population Served	13,677	Decatur Term.: 12,137 Avondale Term.: 12,330	Decatur Term.: 11,648 Avondale Term.: 11,499	Decatur Term.: 9,894 Avondale Term.: 10,457
Served Weekday Ridership	3,000	Decatur Term.: 2,616 Avondale Term.: 1,622	Decatur Term.: 2,616 Avondale Term.: 1,622	Decatur Term.: 2,545 Avondale Term.: 1,558

Note: Route 15 serves areas south of the GSU-Panthersville campus, where the Candler Road ART will not operate. This accounts for a significant portion of the differences in Population Served.

Delivery Timeline



We Want to Hear From You!

- Please take a moment to participate in our brief Candler Road ART survey.
- Use the QR code on the right to navigate to the online survey – your answers will help us better understand how you use transit and how the Candler Road ART can benefit you.





Discussion

Contact us:

Misikir Mengistu

Project Manager I

MARTA

Office of Transit System Planning

2424 Piedmont Rd NE

Atlanta, GA 30324-3330

candler@itsmarta.com



Thank You

